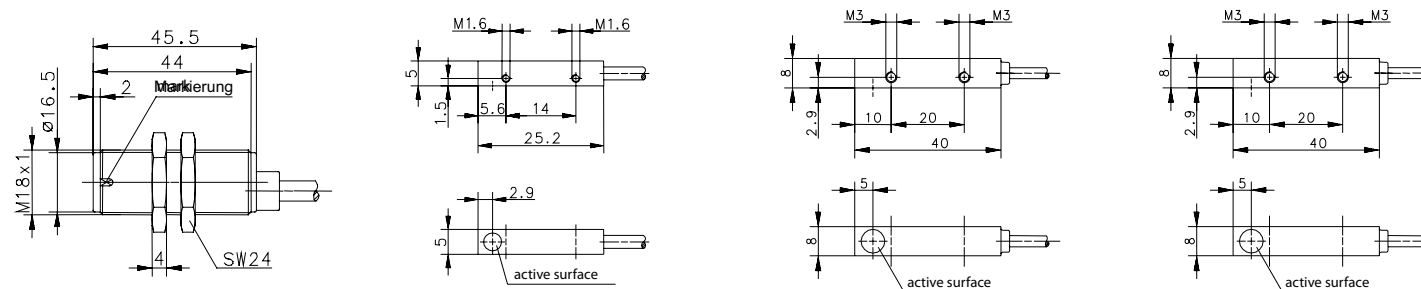


ELECTRONIC MAGNETIC SENSORS Type M18, 5x5x25 mm, 8x8x40 mm

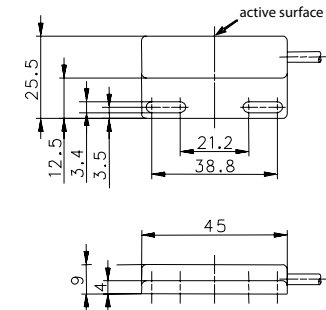
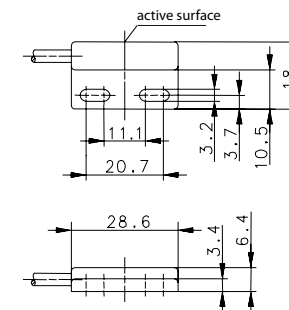
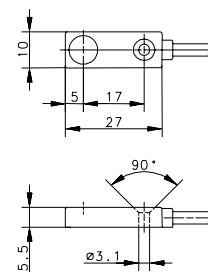
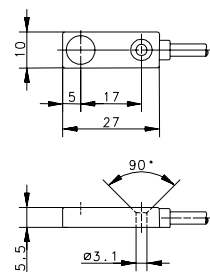


Type	M18	5 x 5 x 25 mm	8 x 8 x 40 mm	8 x 8 x 40 mm	
Enclosure material	PBT, black	CuZn39Pb3	CuZn39Pb3	CuZn39Pb3	
Operating mode	Hall	MR	Hall	MR	
Magnetic sensitivity (mT)	-	3 mT	10 mT	2 mT	
Sensing distance (Sn)	0 – 2 mm	10 mm	17 mm	45 mm	
Reference magnet (Side)	-	T-62 N/S	T-62 N/S	T-62 N/S	
Type of connection	Cable 2 m	Cable 2 m	Cable 2 m	Cable 2 m	
Special feature	Speed sensor				
PNP	NO contact	6373299134 MEM-Q05PS/M03-K2		6373280106 MEM-Q08PS/M02-K2	
PNP	NC contact				
PNP	bistable	6369663029 MEK-M18ND/H-K2			
NPN	NO contact		6362680012 MEM-Q08NS/H10-K2		
NPN	bistable		6363880043 MEM-Q08NB/H11-K2		
Technical data					
Rated operating voltage range	U_b	10–36 VDC	4.5–30 VDC	4.5–24 VDC	10–30 VDC
Rated operating current	I_e	20 mA	200 mA	25 mA	200 mA
Max. switching voltage	F	20 kHz	10 kHz	20 kHz	1500 Hz
Function/operating voltage indicator		-	-/-	-/-	-/-
Sensitivity adjustable					
Short circuit-protection		cyclic	Current limiter	Current limiter	cyclic
Mechanical data					
Ambient temperature (min/max)		-25°C/+70°C	-20°C/+70°C	-25°C/+70°C	-25°C/+70°C
Protection class in accordance with IEC 529, EN 60529		IP67	IP67	IP67	IP67
Connection		3 x 0.14 mm ²	3 x 0.05 mm ²	3 x 0.14 mm ²	3 x 0.14 mm ²



ELECTRONIC MAGNETIC SENSORS Type 27 x 10 x 5 mm, 28.6 x 18 x 6,4 mm, 45 x 25.5 x 9 mm

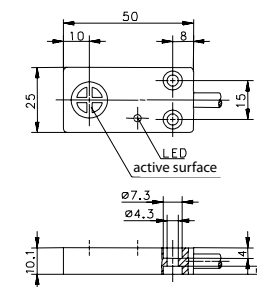
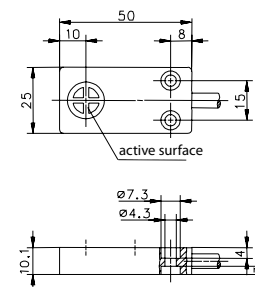
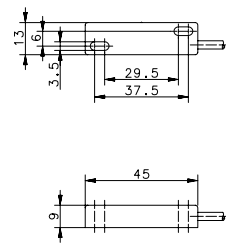
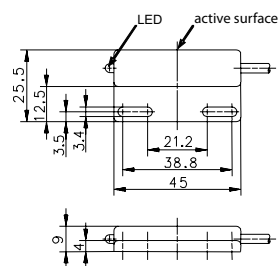
Type		27 x 10 x 5 mm	27 x 10 x 5 mm	28.6 x 18 x 6.4 mm	45 x 25.5 x 9 mm
Enclosure material		PA, black	PA, black	PA, black	PA, black
Operating mode		Hall	Hall	Hall	Hall
Magnetic sensitivity (mT)		10 mT	2 mT	10 mT	10 mT
Sensing distance (Sn)		17 mm	30 mm	17 mm	17 mm
Reference magnet (Side)		T-62 N/S	T-62 N/S	T-62 N/S	T-62 N/S
Type of connection		Cable 2 m	Cable 2 m	Cable 2 m	Cable 2 m
Special feature					
PNP	NO contact				
PNP	NC contact				
PNP	bistable				
NPN	NO contact	6362693010 MEK-E27NS/H10-K2		6362611008 MEK-E29NS/H10-K2	6362645009 MEK-E45NS/H10-K2
NPN	bistable	6363893041 MEK-E27NB/H11-K2	6363893031 MEK-E27NB/H02-K2	6363811039 MEK-E29NB/H11-K2	6363845040 MEK-E45NB/H11-K2
Technical data					
Rated operating voltage range	U_b	4.5–24 VDC	4.5–24 VDC	4.5–24 VDC	4.5–24 VDC
Rated operating current	I_e	25 mA	25 mA	25 mA	25 mA
Max. switching voltage	F	20 kHz	20 kHz	20 kHz	20 kHz
Function/operating voltage indicator		–/–	–/–	–/–	–/–
Sensitivity adjustable					
Short circuit-protection		Current limiter	Current limiter	Current limiter	Current limiter
Mechanical data					
Ambient temperature (min/max)		–25°C/+70°C	–25°C/+70°C	–25°C/+70°C	–25°C/+70°C
Protection class in accordance with IEC 529, EN 60529		IP67	IP67	IP67	IP67
Connection		3 x 0.14 mm ²	3 x 0.14 mm ²	3 x 0.14 mm ²	3 x 0.14 mm ²



ELECTRONIC MAGNETIC SENSORS Type 45x25.5x9 mm, 45x13x9 mm, 50x25x10 mm



Type	45 x 25.5 x 9 mm	45 x 13 x 9 mm	50 x 25 x 10 mm	50 x 25 x 10 mm	
Enclosure material	PA, black	PA, black	PBT, black	PBT, black	
Operating mode	Hall	MR	Hall	Hall	
Magnetic sensitivity (mT)	10 mT	3 mT	10 mT	10 mT	
Sensing distance (Sn)	17 mm	20 mm	17 mm	17 mm	
Reference magnet (Side)	T-62 N/S	T-62 N/S	T-62 N/S	T-62 N/S	
Type of connection	Cable 2 m	Cable 1 m	Cable 2 m	Cable 2 m	
Special feature					
PNP	NO contact	6372245079 MEK-E45PS/H10-KL2		6372290081 MEK-E50PS/H10-KL2	
PNP	NC contact	6372145080 MEK-E45PÖ/H10-KL2		6372190082 MEK-E50PÖ/H10-KL2	
PNP	bistable	6373445129 MEK-E45PB/H11-KL2	6370401203 MEK-E45PB/M03-1	6373490130 MEK-E50PB/H11-KL2	
NPN	NO contact		6362690011 MEK-E50NS/H10-K2		
NPN	bistable		6363890042 MEK-E50NB/H11-K2		
Technical data					
Rated operating voltage range	U_b	10–39 VDC	10–60 VDC	4.5–24 VDC	10–39 VDC
Rated operating current	I_e	400 mA	200 mA	25 mA	400 mA
Max. switching voltage	F	10 kHz	20 Hz	20 kHz	10 kHz
Function/operating voltage indicator		LED/–	–/–	–/–	LED/–
Sensitivity adjustable					
Short circuit-protection		cyclic	–	Current limiter	cyclic
Mechanical data					
Ambient temperature (min/max)		–25°C/+70°C	–5°C/+70°C	–25°C/+70°C	–25°C/+70°C
Protection class in accordance with IEC 529, EN 60529		IP67	IP67	IP67	IP67
Connection		3 x 0.14 mm ²	2 x 0.14 mm ²	3 x 0.50 mm ²	3 x 0.50 mm ²





Type	88 x 25 x 13 mm
Enclosure material	PA, black
Operating mode	MR
Magnetic sensitivity (mT)	3 mT
Sensing distance (Sn)	20 mm
Reference magnet (Side)	T-62 N/S
Type of connection	Cable 1 m
Special feature	

PNP	NO contact	
PNP	NC contact	
PNP	bistable	6370442204 MEK-E90PB/M03-1
NPN	NO contact	
NPN	bistable	

Technical data		
Rated operating voltage range	U_b	10–60 VDC
Rated operating current	I_e	200 mA
Max. switching voltage	F	20 Hz
Function/operating voltage indicator		–/–
Sensitivity adjustable		
Short circuit-protection		–
Mechanical data		
Ambient temperature (min/max)		–5°C/+70°C
Protection class in accordance with IEC 529, EN 60529		IP67
Connection		2 x 0.50 mm ²

